



# PRO POWER UNITS ILLUSTRATED PARTS LIST

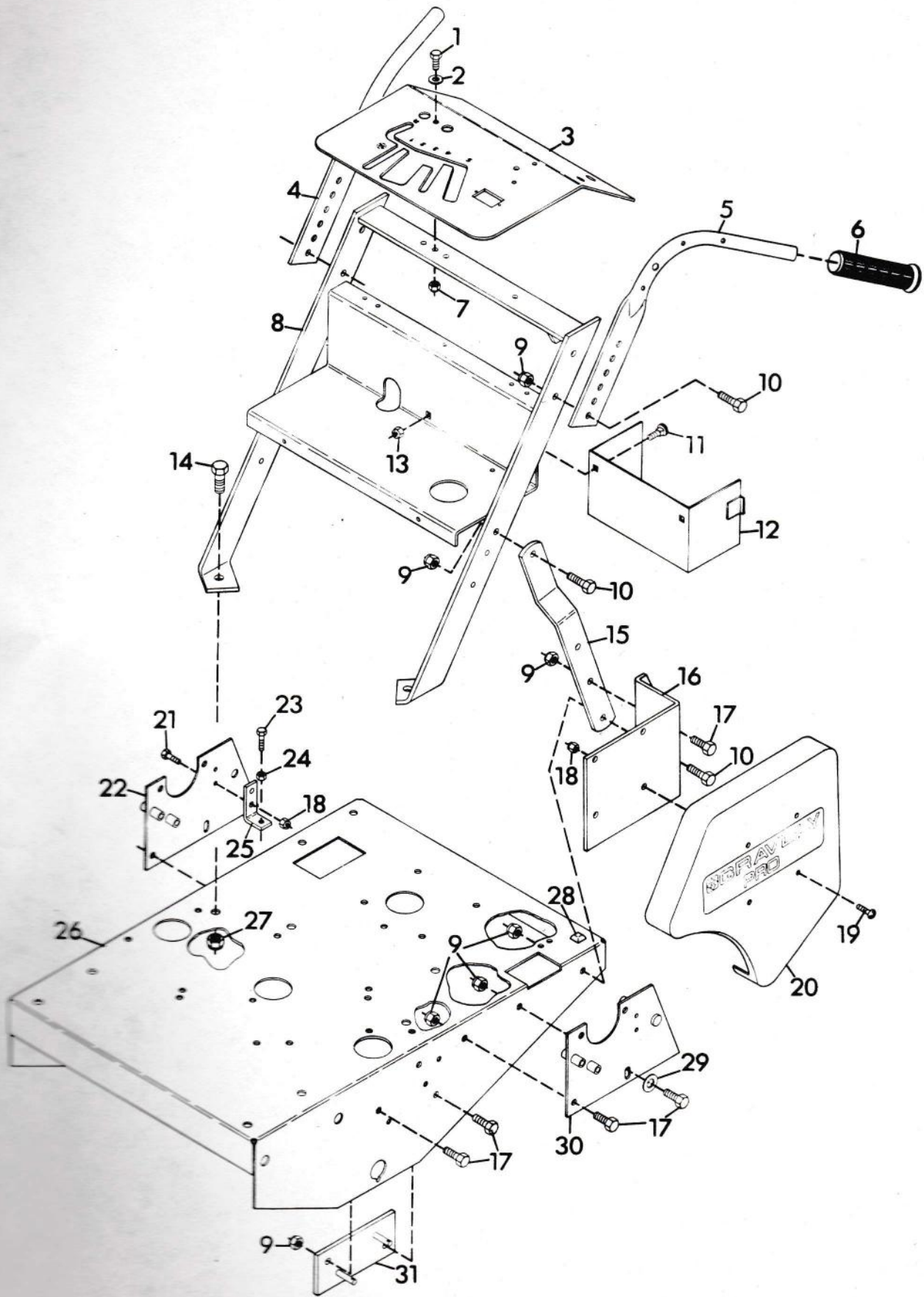
TO CONTINUE ITS PROGRAM OF QUALITY AND DESIGN IMPROVEMENTS, THE MANUFACTURER RESERVES THE RIGHT TO CHANGE, SPECIFICATIONS, DESIGNS AND PRICES WITHOUT NOTICE AND WITHOUT INCURRING OBLIGATION. THE MANUFACTURER ALSO RESERVES THE RIGHT TO SHIP WITHOUT NOTICE AND WITHOUT INCURRING OBLIGATION.

 **GRAVELLY**<sup>®</sup>  
One Gravelly Lane, Clemmons, NC 27012

## TABLE OF CONTENTS

	<u>Page</u>
Frame . . . . .	1
Steering Control . . . . .	3
Wheel Drive . . . . .	5
Gear Selector . . . . .	7
PTO Clutch Linkage . . . . .	9
Traction Clutch Linkage . . . . .	11
Main Drive . . . . .	13
Wheel . . . . .	14
Fuel and Exhaust System - 12 and 12.5 H.P. Units . .	15
Fuel and Exhaust System - 16, 17 and 18 H.P. Units .	17
Electrical System - 12 and 12.5 H.P. Units . . . . .	19
Electrical System - 16, 17 and 18 H.P. Units . . . .	21
Transmission . . . . .	23

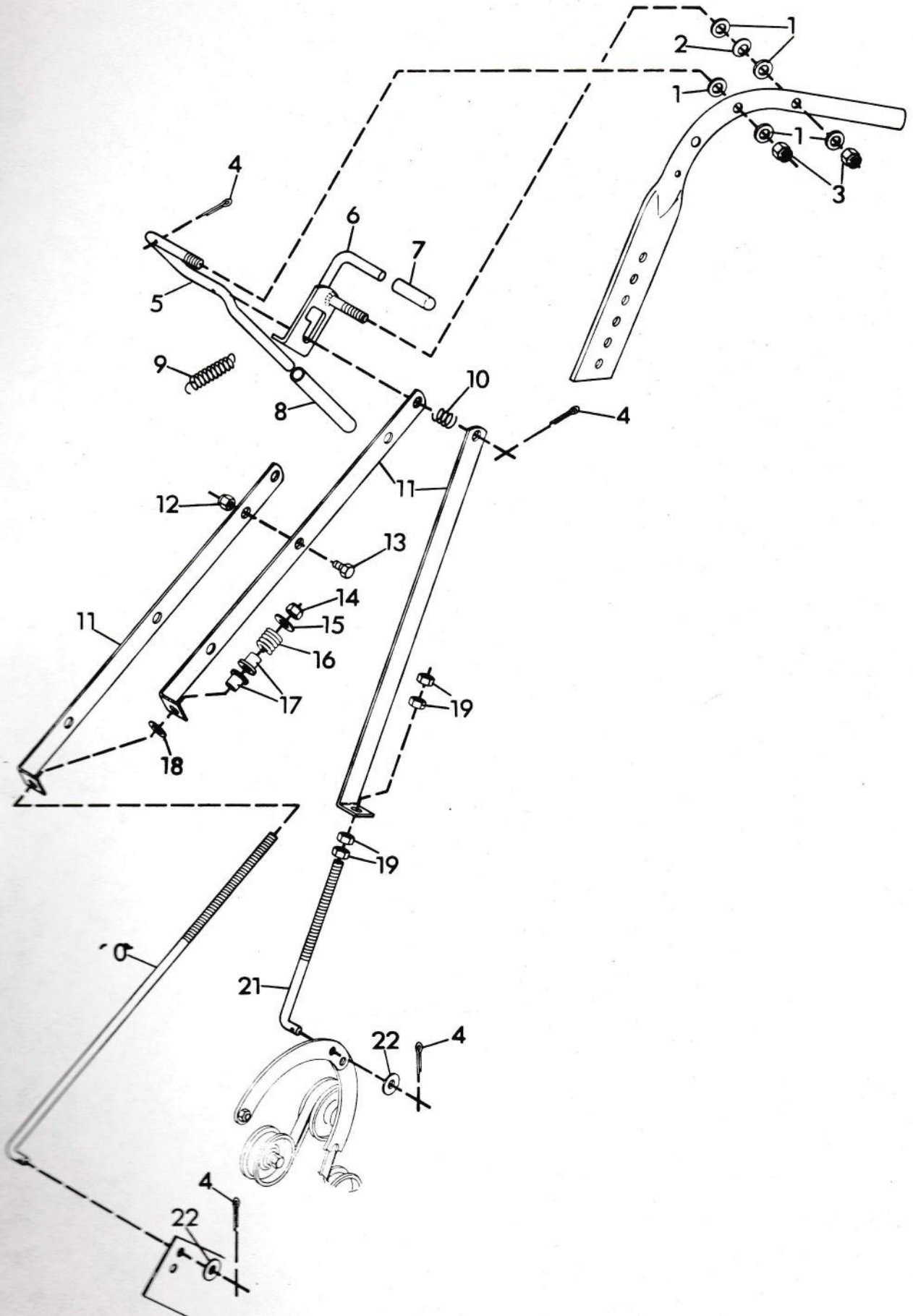
# FRAME



## FRAME

ITEM NO.	PART NO.	QTY.	DESCRIPTION
1	180079	2	Bolt, Hex 5/16-18x1.00
2	120393	2	Washer, Flat .344x.688.x065
3	43216	1	Plate, Silk Screen
4	44541	1	Handlebar, R.H.
5	44540	1	Handlebar, L.H.
6	41563	2	Grip, Handlebar
7	419455	2	Nut, Lock 5/16-18
8	42982	1	Weldment, Handlebar Support
9	456004	18	Nut, Lock 3/8-16
10	180124	8	Bolt, Hex 3/8-16x1.25
11	126211	2 (16, 17 and 18 HP)	Bolt, 5/16-18x.625 Rd Hd Sq Nk
12	41313	1 (16, 17 and 18 HP)	Weldment, Battery Box
13	413447	2 (16, 17 and 18 HP)	Nut, Lock 5/16-18
14	180175	2	Bolt, Hex 1/2-13x1.25
15	34878	2	Brace, Handlebar Support
16	43189	1	Bracket, Belt Guard L.H.
	43190	1	Bracket, Belt Guard R.H.
17	180122	10	Bolt, Hex 3/8-16x1.00
18	419454	12	Nut, Lock 1/4-20
19	160536	8	Screw, Machine 1/4-20x.625 Rd Hd
20	43447	1	Guard, Belt L.H.
	43448	1	Guard, Belt R.H.
21	180018	4	Bolt, Hex 1/4-20x.625
22	41281	1	Weldment, Bearing Support R.H.
23	180022	2	Bolt, Hex 1/4-20x1.00
24	120375	2	Nut, Hex 1/4-20
25	40757	2	Bracket
26	43200	1	Frame, Pro
27	435507	2	Nut, Lock 1/2-13
28	40176	1	Stop
29	120394	2	Washer, Flat .406x.812x.065
30	41280	1	Weldment, Bearing Support L.H.
31	43472	1	Weldment, Brake Pin Plate L.H.
	43471	1	Weldment, Brake Pin Plate R.H.
NS	40046	1	Decal, America

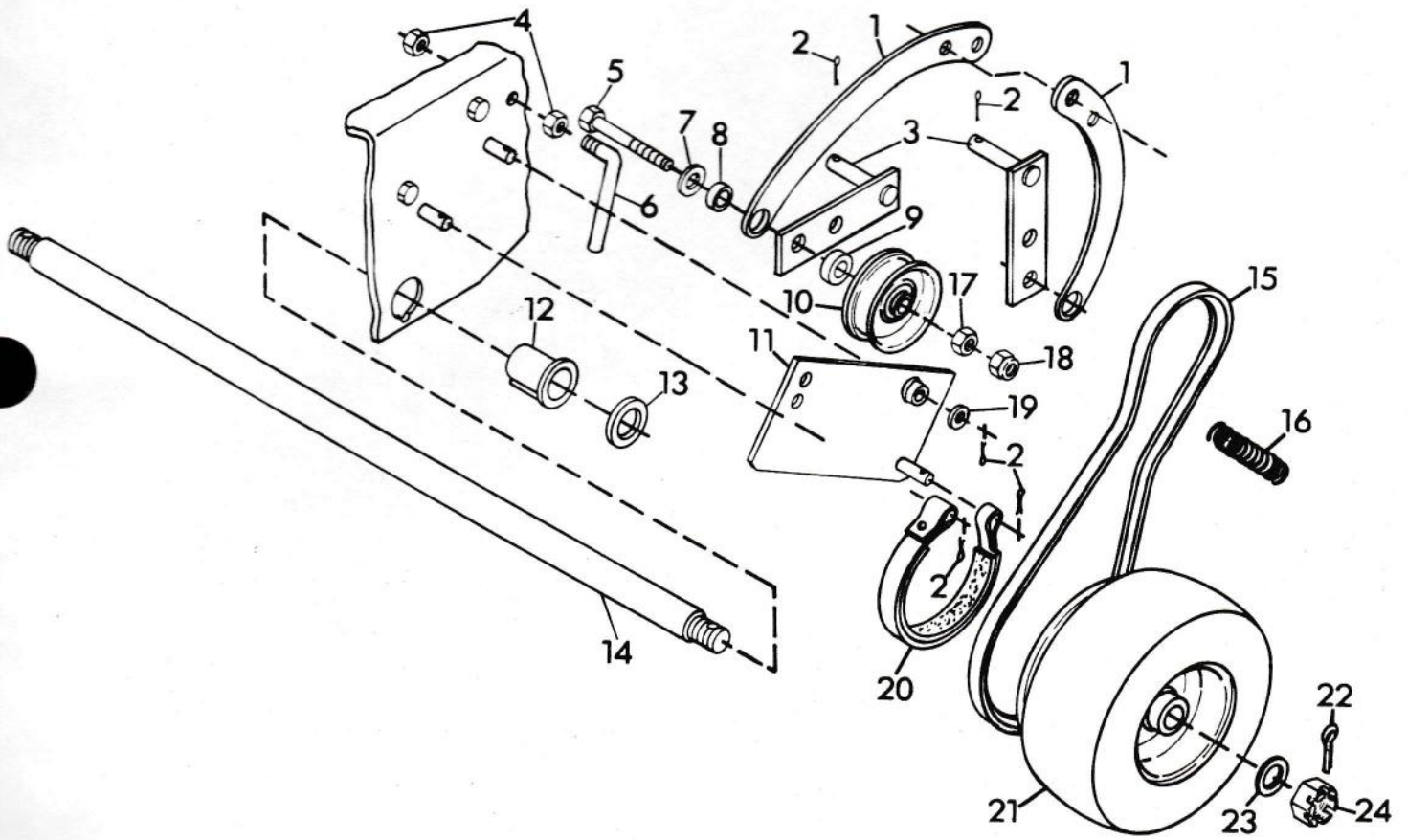
# STEERING CONTROL



## STEERING CONTROL

ITEM NO.	PART NO.	QTY.	DESCRIPTION
1	20775	10	Washer, Nylon .375x.75x.06
2	41623	2	Washer, Spring .375 I.D.
3	456004	4	Nut, Lock 3/8-16
4	121222	8	Pin, Cotter .09x.75
5	42984	2	Lever, Steering
6	42990	2	Latch, Steering Lever
7	43192	2	Tip, Brake Lock Lever
8	43197	2	Grip, Hand Clutch Lever
9	43446	2	Spring, Extension
10	43193	2	Spring, Compression
11	42992	6	Strap, Clutch-Brake
12	419454	4	Nut, Lock 1/4-20
13	180016	4	Bolt, Hex 1/4-20x.50
14	419455	2	Nut, Lock 5/16-18
15	120393	2	Washer, Flat .344x.688x.065
16	11779	2	Spring, Comp. 1x.78x338
17	41988	4	Bushing, Interlock Lever
18	44478	2	Ring, Circular Push-On
19	120376	8	Nut, Hex 5/16-18
20	43444	2	Rod, Brake Lower
21	41990	2	Rod, Clutch
22	446470	4	Washer, Flat .375x1.125x.065

# WHEEL DRIVE

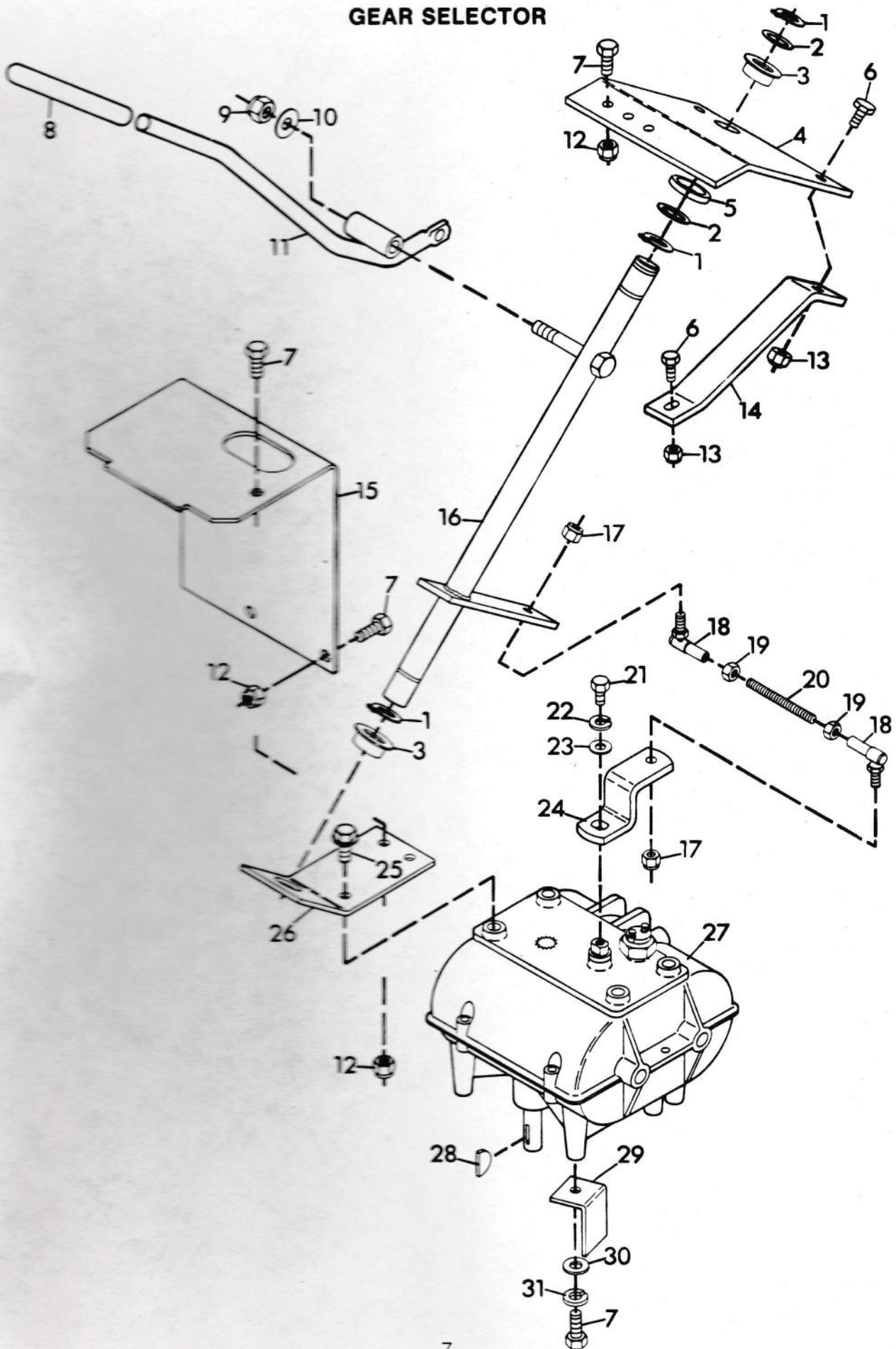




## WHEEL DRIVE

ITEM NO.	PART NO.	QTY.	DESCRIPTION
1	42979	4	Strap, Wheel Clutch
2	177923	10	Pin, Cotter .125x.75
3	42977	4	Weldment, Wheel Clutch L.H.
4	120375	4	Nut, Hex 1/4-20
5	180132	4	Bolt, Hex 3/8-16x2.25
6	41355	2	Rod, Pulley Cleaning
7	120394	4	Washer, Flat .406x.812x.065
8	42989	4	Bushing, Wheel Clutch
9	14672	4	Spacer, Idler
10	27824	4	Sheave, Idler
11	44342	1	Weldment, Brake Lever L.H.
	44343	1	Weldment, Brake Lever R.H.
12	44120	2	Bushing, Pro Axle
13	41686	2	Spacer, Wheel
14	41317	1	Shaft, Axle
	43950	1	Shaft, Axle (Pro-32)
15	41599	2	Belt, Traction
16	34400	2	Spring
17	120377	4	Nut, Hex 3/8-16
18	413534	4	Nut, Lock 3/8-16
19	120393	2	Washer, Flat .344x.688x.065
20	34306	1	Assembly, Brake Band L.H.
	34307	1	Assembly, Brake Band R.H.
21	42270	2	Assembly, Pro Wheel and Tire
	41151	2	Wheel, 13x5.00-6 (Pro-32)
22	137228	2	Pin, Cotter .156x1.50
23	423315	2	Washer, Flat .813x1.37x.100
24	427640	2	Nut, Slotted 3/4-16

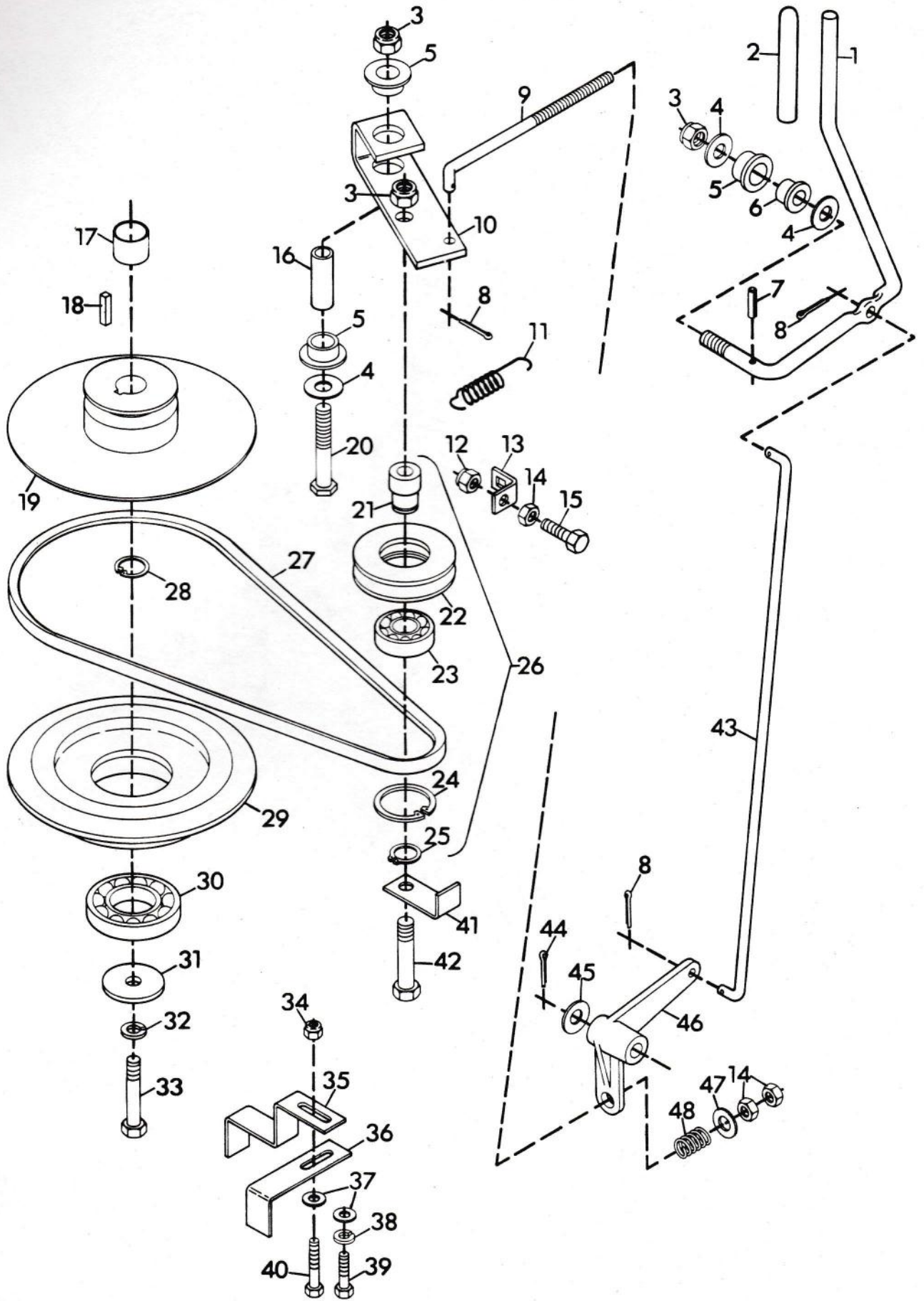
# GEAR SELECTOR



## GEAR SELECTOR

ITEM NO.	PART NO.	QTY.	DESCRIPTION
1	26300	3	Ring, Retaining
2	11223	AR	Race, Bearing Thrust
3	10174	2	Bushing, Nylon .76x1x.6 Flange
4	44134	1	Plate, Shifter Support Upper
5	41337	1	Spacer, Shifter Shaft
6	180020	2	Bolt, Hex 1/4-20x.75
7	180077	8	Bolt, Hex 5/16-18x.75
8	43196	1	Grip, PTO Lever
9	456004	1	Nut, Lock 3/8-16
10	120394	1	Washer, Flat .406x.812x.065
11	43214	1	Weldment, Shift Lever
12	419455	4	Nut, Lock 5/16-18
13	419454	2	Nut, Lock 1/4-20
14	44135	1	Brace, Shifter Plate
15	41345	1	Guard, Transmission Chain
16	44137	1	Weldment, Shifter Shaft
17	416430	2	Nut, Lock 1/4-28
18	32352	2	Ball Joint, Disconnecting
19	120367	2	Nut, Hex 1/4-28
20	41688	1	Rod, Trans. Shifter
21	181561	1	Bolt, Hex 1/4-28x.50
22	120380	1	Washer, Lock 1/4
23	422845	1	Washer, Flat .281x.625x.065
24	34418	1	Arm, Trans. Shift
25	34357	2	Bolt, Self-Tapping 5/16-18x.62
26	44098	1	Plate, Shift Support Lower
27	40544	1	Transmission, Pro Line
28	124549	1	Key, Woodruff .187x.750 Hard
29	34329	1	Guide, V-Belt
30	120393	1	Washer, Flat .344x.688x.065
31	120214	4	Washer, Lock 5/16 Reg.

# PTO CLUTCH LINKAGE



ITEM  
NO.

PART NO.

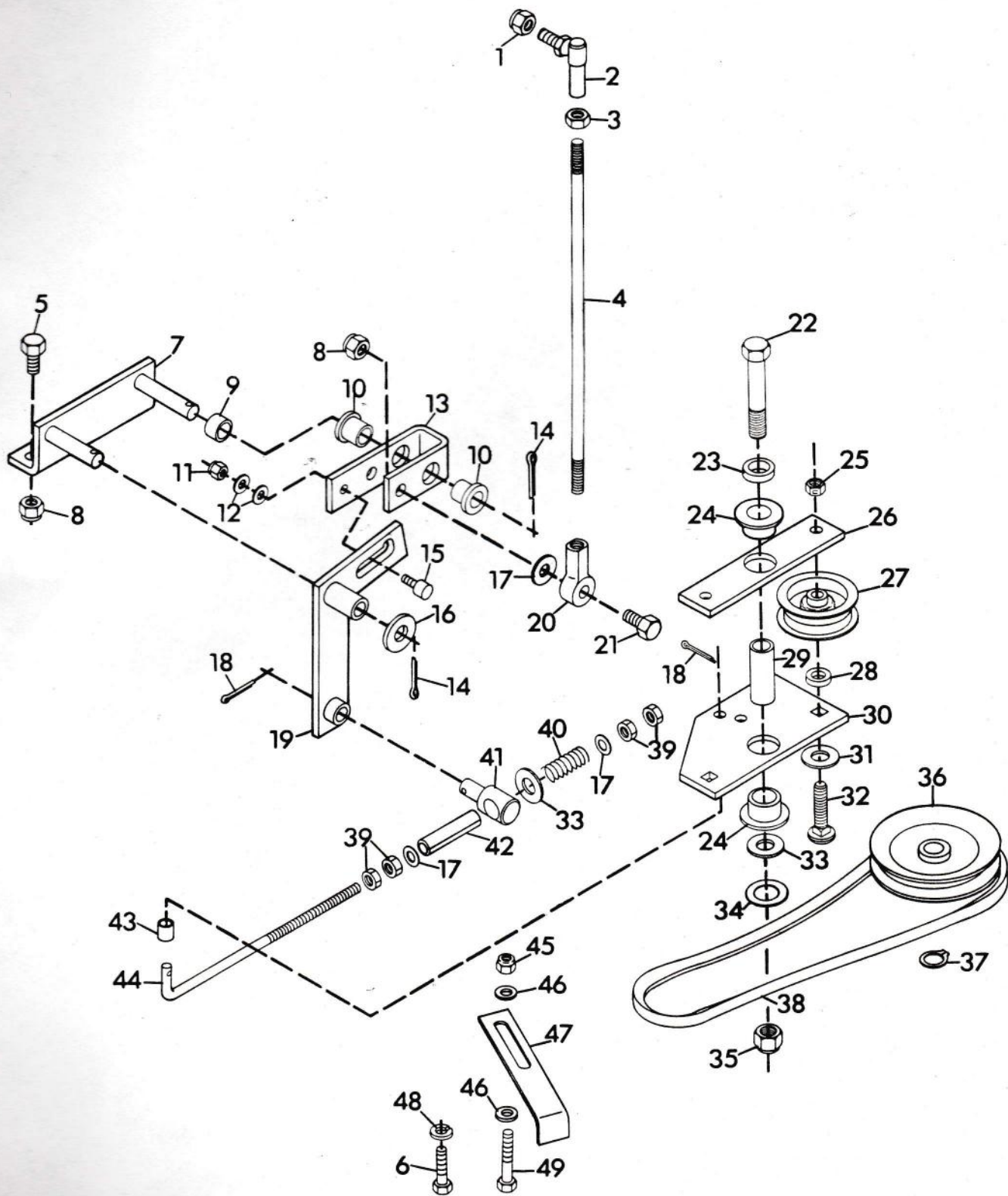
## PTO CLUTCH LINKAGE

QTY.

DESCRIPTION

ITEM NO.	PART NO.	QTY.	DESCRIPTION
1	42985	1	Lever, PTO Actuating
2	43196	1	Grip, PTO Lever
3	435507	3	Nut, Lock 1/2-13
4	415543	3	Washer, Flat .531x1.250x.100
5	10174	3	Bushing, Nylon .76x1x.6 Flange
6	34738	1	Bushing, .513x.750x.625
7	421202	1	Pin, Spring .187x1.000
8	121222	3	Pin, Cotter .09x.75
9	41334	1	Rod, PTO Clutch Actuating
10	41370	1	Arm, Idler Pivot
11	34385	1	Spring, PTO Return
12	456004	1	Nut, Lock 3/8-16
13	34894	1	Tab, Spring
14	120377	3	Nut, Hex 3/8-16
15	180126	1	Bolt, Hex 3/8-16x1.50
16	39015	1	Spacer
17	35381	1 (12.5, 16 and 18 HP)	Spacer, Electric Clutch
	42540	1 (12 & 17 HP)	Spacer, Manual Start
18	18345	1	Key, Square .250x1.250
19	41839	1	Hub, PTO and Drive Clutch
20	41333	1	Bolt, Hex 1/2-13x2.75 Special
21	39327	1	Bushing
22	38896	1	Sheave, Idler
23	38898	1	Bearing, Ball
24	18960	1	Ring, Retaining
25	39331	1	Ring, Retaining
26	39336	1	Assembly, Idler Sheave
27	43213	1	V-Belt, PTO Clutch
28	31624	1	Ring, Retaining
29	41353	1	Sheave, Mower Clutch
30	35330	1	Bearing, Ball 1.574x3.149x.708
31	44379	1	Washer, Special
32	120383	1 (12, 16, 17 and 18 HP)	Washer, Lock 7/16 Reg.
33	181676	1 (Kohler Units)	Bolt, Hex 7/16-20x2.50
	42494	1 (Kawasaki Units)	Bolt, Hex 10mmx1.5
34	419455	2 (B&S 12 HP Units)	Nut, Lock 5/16-18
		1 (16, 18 HP)	
35	43194	1	Guide, PTO V-Belt
36	34309	1	Guide, V-Belt
37	120393	4 (12 HP)	Washer, Flat .344x.688x.065
		2 (12.5, 16, 17 and 18 HP)	
38	21909	2 (Kawasaki Units)	Washer, Lock 8mm Spring
39	21914	2 (Kawasaki Units)	Bolt, Hex M8 x 1.25 30mm
40	180085	1 (16, 18 HP)	Bolt, Hex 5/16-18x1.75
		2 (12 HP)	
41	39330	1	Guide, Belt
42	180185	1	Bolt, Hex 1/2-13x2.50
43	42988	1	Rod, PTO Control
44	177923	1	Pin, Cotter .125x.75
45	120396	1	Washer, Flat .531x1.062x.095
46	41838	1	Lever, PTO Clutch
47	120394	1	Washer, Flat .406x.812x.065
48	11779	1	10 Spring, Comp. 1x.78x338

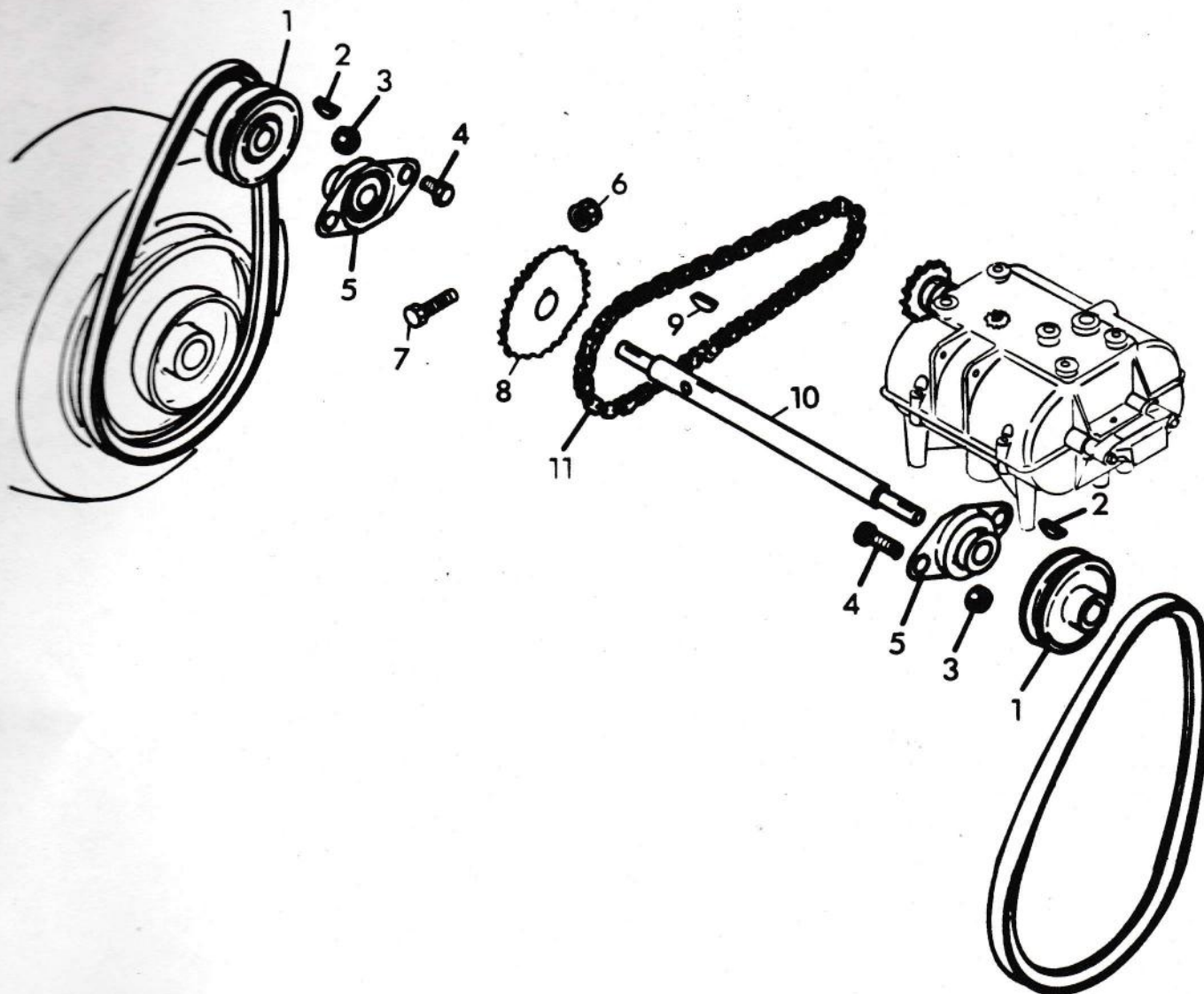
# TRACTION CLUTCH LINKAGE



## TRACTION CLUTCH LINKAGE

ITEM NO.	PART NO.	QTY.	DESCRIPTION
1	192481	1	Nut, Lock 3/8-24
2	21084	1	Ball Joint, Steering
3	120369	1	Nut, Hex 3/8-24
4	43248	1	Rod, Clutch Actuating
5	180122	2	Bolt, Hex 3/8-16x1.00
6	21914	2 (12 HP)	Bolt, Hex M8 x 1.25 30mm
7	43440	1	Weldment, Fwd-Rev Control Bracket
8	456004	3	Nut, Lock 3/8-16
9	41301	1	Bushing
10	34738	2	Bushing, .513x.750x.625
11	454750	1	Nut, Lock 1/4-28
12	120392	2	Washer, Flat .281x.625x.065
13	41758	1	Lever, Fwd-Rev Activating
14	177923	2	Pin, Cotter .125x.75
15	41330	1	Roller, Clutch Cam
16	120396	1	Washer, Flat .531x1.062x.095
17	120394	3	Washer, Flat .406x.812x.065
18	121222	2	Pin, Cotter .09x.75
19	43442	1	Weldment, Fwd-Rev Cam
20	43249	1	Rod End, Spherical Bearing
21	180124	1	Bolt, Hex 3/8-16x1.25
22	180190	1	Bolt, Hex 1/2-13x3.00
23	41324	1	Spacer
24	10174	2	Bushing, Nylon .76x1x.6 Flange
25	413534	2	Nut, Lock 3/8-16
26	43199	1	Plate, Idler
27	27829	2	Sheave, Idler
28	14672	2	Spacer, Idler .406x.750x.188
29	41992	1	Spacer
30	43198	1	Plate, Idler
31	103343	2	Washer, Flat .531x1.063x.095
32	126416	2	Bolt, 3/8-16x1.75 Rd Hd Sq Nk
33	415543	2	Washer, Flat .531x1.250x.100
34	14998	1	Race, Bearing Thrust
35	435507	1	Nut, Lock 1/2-13
36	34331	1	Sheave, Transmission
37	15338	1	Ring, Retaining
38	43195	1	Belt, Engine-Transmission Drive
39	120376	4	Nut, Hex 5/16-18
40	10682	1	Spring, Comp. 2x.720x15.5 Rate
41	40625	1	Pivot
42	21381	1	Sleeve, Spring
43	10155	1	Bushing, .375x.500x.437
44	44111	1	Rod, Clutch
45	419455	2 (B & S and Kohler Units)	Nut, Lock 5/16-18
46	120393	4 (B & S and Kohler Units) 2 (Kawasaki Units)	Washer, Flat .344x.688x.065
47	34310	1	Guide, V-Belt
48	21909	2 (12 HP)	Washer, Lock 8mm Spring
49	180085	2	Bolt, Hex 5/16-18x1.75

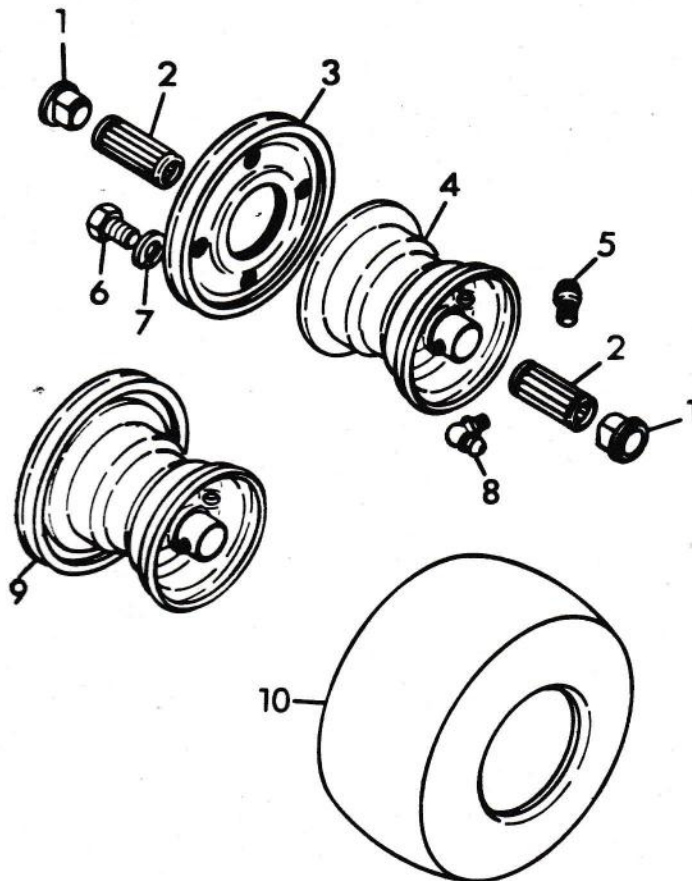
## MAIN DRIVE



ITEM NO.	PART NO.	QTY.	DESCRIPTION
1	34321	2	Pulley, Jack-Shaft
2	124549	2	Key, Woodruff 3/16x.750 Hard
3	456004	4	Nut, Lock 3/8-16
4	180120	4	Bolt, Hex 3/8-16x.75
5	30986	2	Bearing, Fan
6	419454	1	Nut, Lock 1/4-20
7	180046	1	Bolt, Hex 1/4-20x2.25
8	41321	1	Sprocket, 28T .5 Pitch
9	218211	1	Key, Woodruff .25x.75 Hard
10	41322	1	Shaft, Jack
11	40543	1	Chain, No. 40

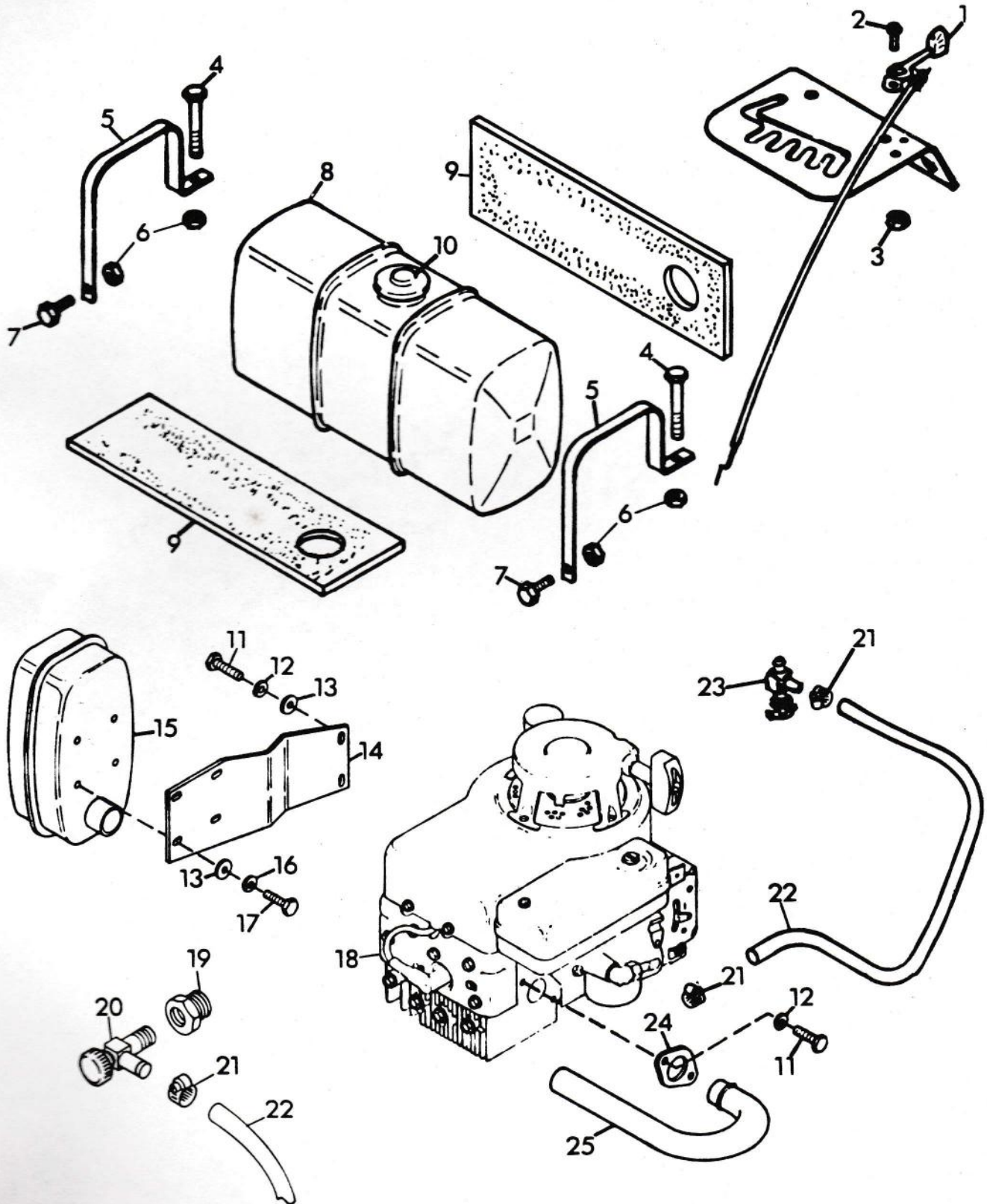


# WHEEL



ITEM NO.	PART NO.	QTY.	DESCRIPTION
1	34661	2	Bearing, Flange
2	34660	2	Bearing, 7/8x2.50
	41153	2	Bearing, 7/8x2.00 (Pro 32)
3	42271	1	Assembly, Pulley and Brake Drum
4	42272	1	Assembly, Wheel
5	11191	1	Assembly, Valve Stem
6	180077	4	Bolt, Hex 5/16-18x.75
7	120214	4	Washer, Lock 5/16 Reg.
8	411032	1	Fitting, Lube 90 Deg.
9	41154	1	Rim (Pro-32)
10	34663	1	Tire, 13x6.50-6
	41155	1	Tire, 13x5.00-6 (Pro-32)
NS	41151	2	Assembly, Wheel 13x5.00-6 (Pro-32)

# FUEL AND EXHAUST SYSTEM — 12 H.P. AND 12.5 H.P. UNITS



FUEL AND EXHAUST SYSTEM — 12 H.P. AND 12.5 H.P. UNITS

ITEM NO.	PART NO.	QTY.	DESCRIPTION
1	43302	1	Lever, Control
2	159920	2	Screw, Mach. 10-24x.50 PHD
3	190254	2	Nut, Lock 10-24
4	180042	2	Bolt, Hex 1/4-20x1.75
5	44100	2	Strap, Fuel Tank
6	419454	4	Nut, Lock 1/4-20
7	180018	2	Bolt, Hex 1/4-20x.625
8	34861	1	Tank, Fuel (12 qts.)
9	41689	2	Pad, Gas Tank
10	2505	1	Cap, Gas Tank
11	180077	4	Bolt, Hex 5/16-18x.75
12	120214	4	Washer, Lock 5/16 Reg.
13	120393	6	Washer, Flat .344x.688x.065
14	37732	1	Plate, Exhaust
15	37805	1	Muffler
16	120380	4	Washer, Lock 1/4 Reg.
17	180020	4	Bolt, Hex 1/4-20x.75
18	42611	1	Engine, 12 H.P. B&S
	42974	1	Engine, 12.5 H.P. Kawasaki
19	35328	1 (B&S Units)	Adaptor, Oil Drain
	41831	1 (Kawasaki Units)	Adaptor, Oil Drain
20	35329	1	Cock, Oil Drain
21	32045	3	Clamp, Hose
22	21134	2 ft.	Hose, Fuel
23	7354	1	Valve and Strainer
24	37796	1	Flange, Muffler
25	37731	1	Tube, Exhaust
NS	41269	1 (Kawasaki Units)	Kit, Oil Filter

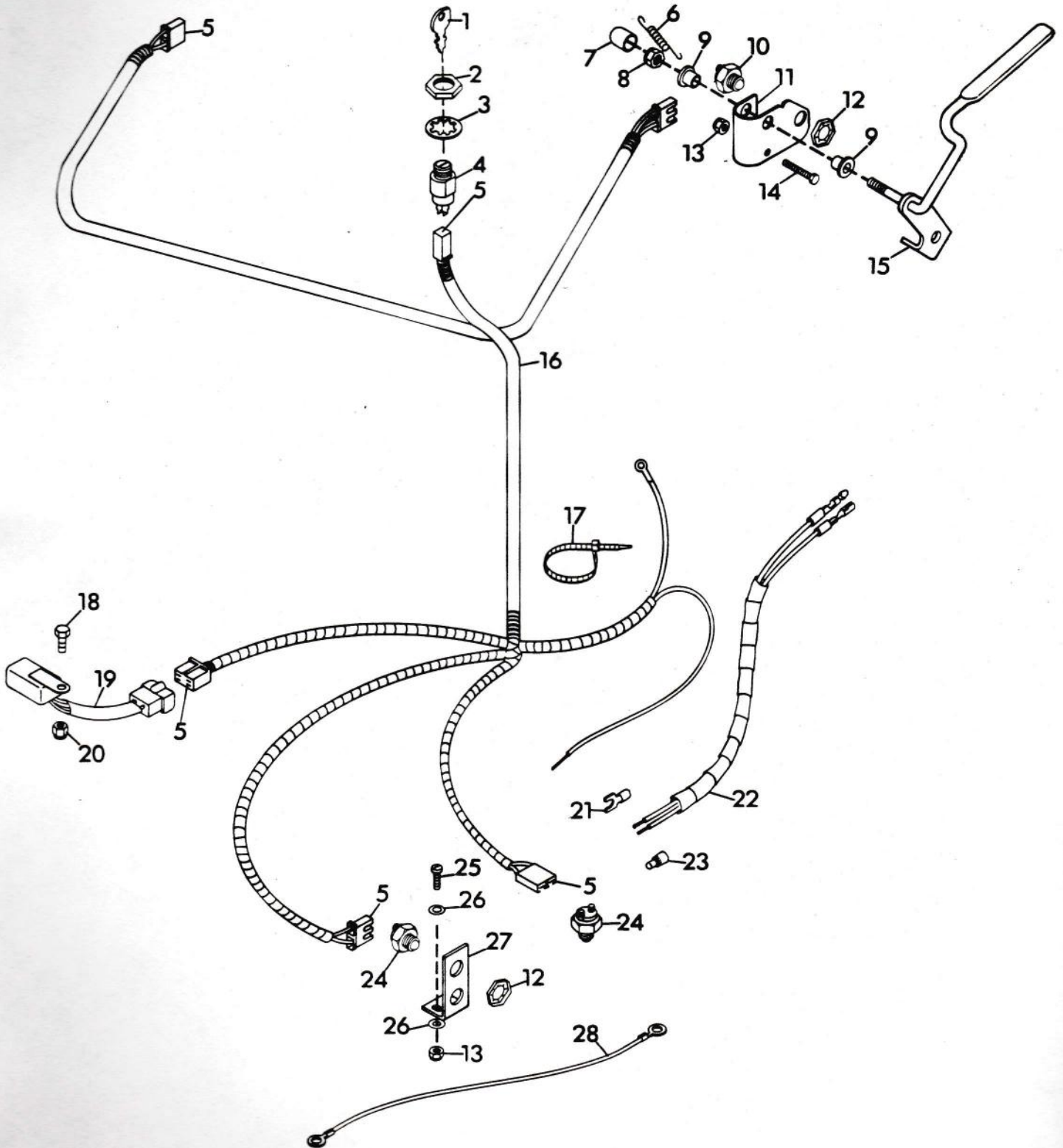
NOTE: Item Numbers 11 through 17, 24 and 25 pertain only to Briggs and Stratton engine units.



FUEL AND EXHAUST SYSTEM — 16, 17 AND 18 H.P. UNITS

ITEM NO.	PART NO.	QTY.	DESCRIPTION
1	35139	1 (16 HP)	Lever, Control
	43302	1 (17 HP)	Lever, Control
	43434	1 (18 HP)	Lever, Control
2	159920	2	Screw, Mach. 10-24x.50 PHD
3	190254	2	Nut, Lock 10-24
4	35137	1 (16, 18 HP)	Control, Choke
5	180018	3 (16 HP)	Bolt, Hex 1/4-20x.625
		2 (17, 18 HP)	
6	120392	1 (16 HP)	Washer, Flat .281x.625x.065
7	27122	1 (16 HP)	Clamp
8	124925	1 (16, 18 HP)	Nut, Jam 3/8-24 Hex
9	41689	2	Pad, Gas Tank
10	180042	2	Bolt, Hex 1/4-20x1.75
11	44100	2	Strap, Fuel Tank
12	419454	4	Nut, Lock 1/4-20
13	34861	1	Tank, Fuel (12 qts.)
14	2505	1	Cap, Gas Tank
15	35329	1	Cock, Oil Drain
16	35328	1 (16, 18 HP)	Adaptor, Oil Drain
	41831	1 (17 HP)	Adaptor, Oil Drain
17	32045	3	Clamp, Hose
18	21134	2 ft.	Line, Fuel
19	7354	1	Valve and Strainer
20	41335	1	Engine, 16 HP B&S
	43324	1	Engine, 17 HP Kawasaki
	43315	1	Engine, 18 HP Kohler
21	14728	1 (16 HP)	Clamp, Muffler
22	43453	1 (16 HP)	Deflector, Exhaust

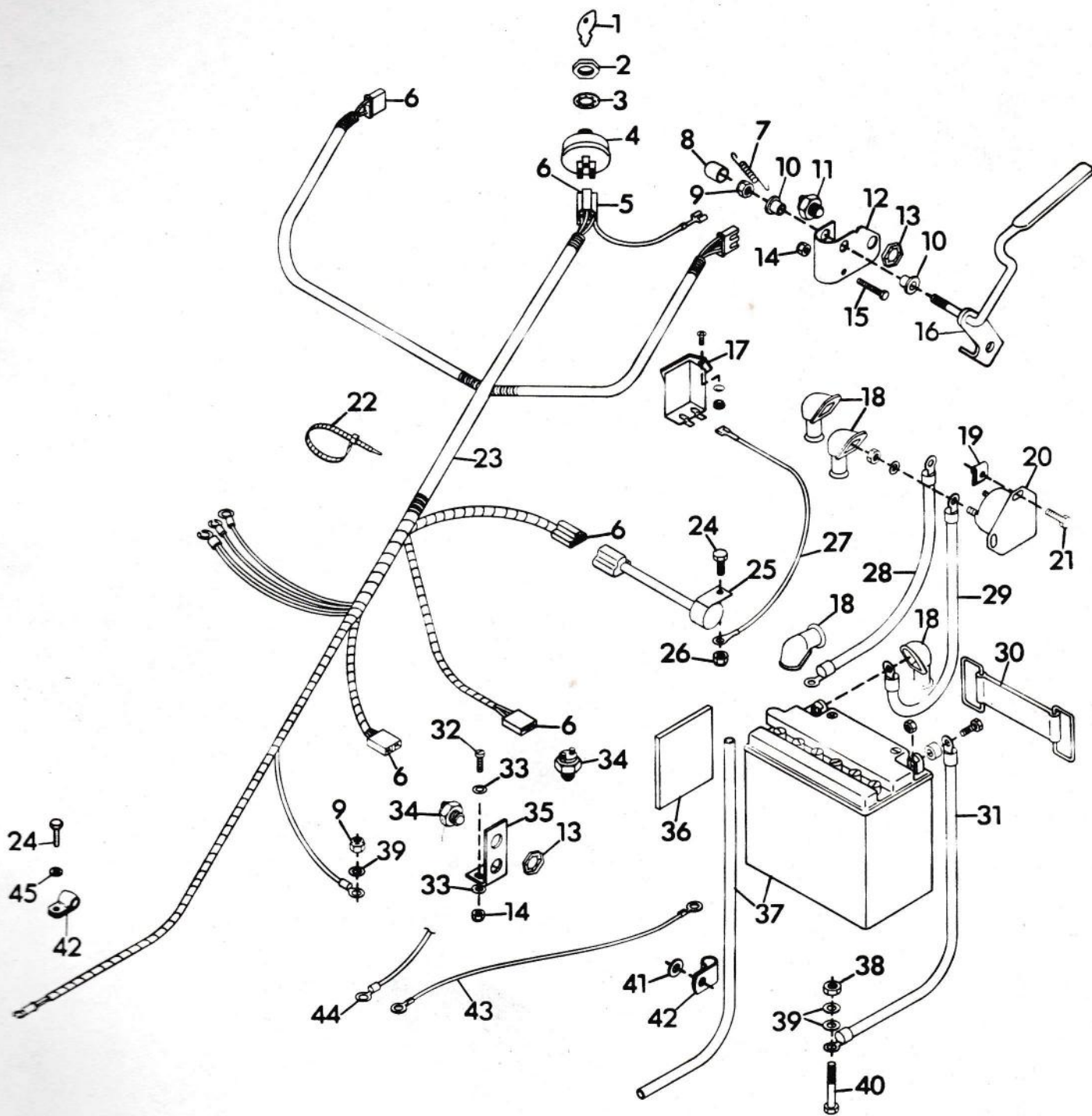
ELECTRICAL SYSTEM — 12 H.P. AND 12.5 H.P. UNITS



ELECTRICAL SYSTEM — 12 H.P. AND 12.5 H.P. UNITS

ITEM NO.	PART NO.	QTY.	DESCRIPTION
1	18570	1	Key, Ignition Switch
2	18585	1	Nut, Jam 5/8-32
3	18586	1	Washer, Lock 5/8 Int. Tooth
4	30202	1	Switch
5	38059	10	Terminal
6	41551	2	Spring, Interlock Lever
7	42573	1	Closure, Vinyl
8	419455	2	Nut, Lock 5/16-18
9	41988	4	Bushing, Interlock Lever
10	20916	2	Switch, Interlock
11	41987	2	Bracket, Interlock Actuating
12	107354	3	Nut, Stamped 9/16-18
13	190254	4	Nut, Lock 10-24
14	436738	2	Screw, Mach. 10-24x1.50 PHD
15	43474	2	Lever, Presence Control
16	41832	1	Harness
17	10629	4 (B&S Units)	Tie, Cable
		6 (Kawasaki Units)	Tie, Cable
18	180018	1	Bolt, Hex 1/4-20x.625
19	41882	1	Module, Interlock Recoil
20	419454	1	Nut, Lock 1/4-20
21	42560	1 (B&S Units)	Terminal, Pre-Insulated
22	42477	1 (Kawasaki Units)	Wire, Engine Kill
23	11763	1 (Kawasaki Units)	Nut, Wire
24	34640	2	Switch, Neutral Start
25	159947	2	Screw, Machine 10-24x.75 PHD
26	131015	4	Washer, Flat .188x.438x.049
27	34637	1	Bracket, Interlock Switch
28	42529	1	Wire, Ground

# ELECTRICAL SYSTEM — 16, 17 AND 18 H.P. UNITS





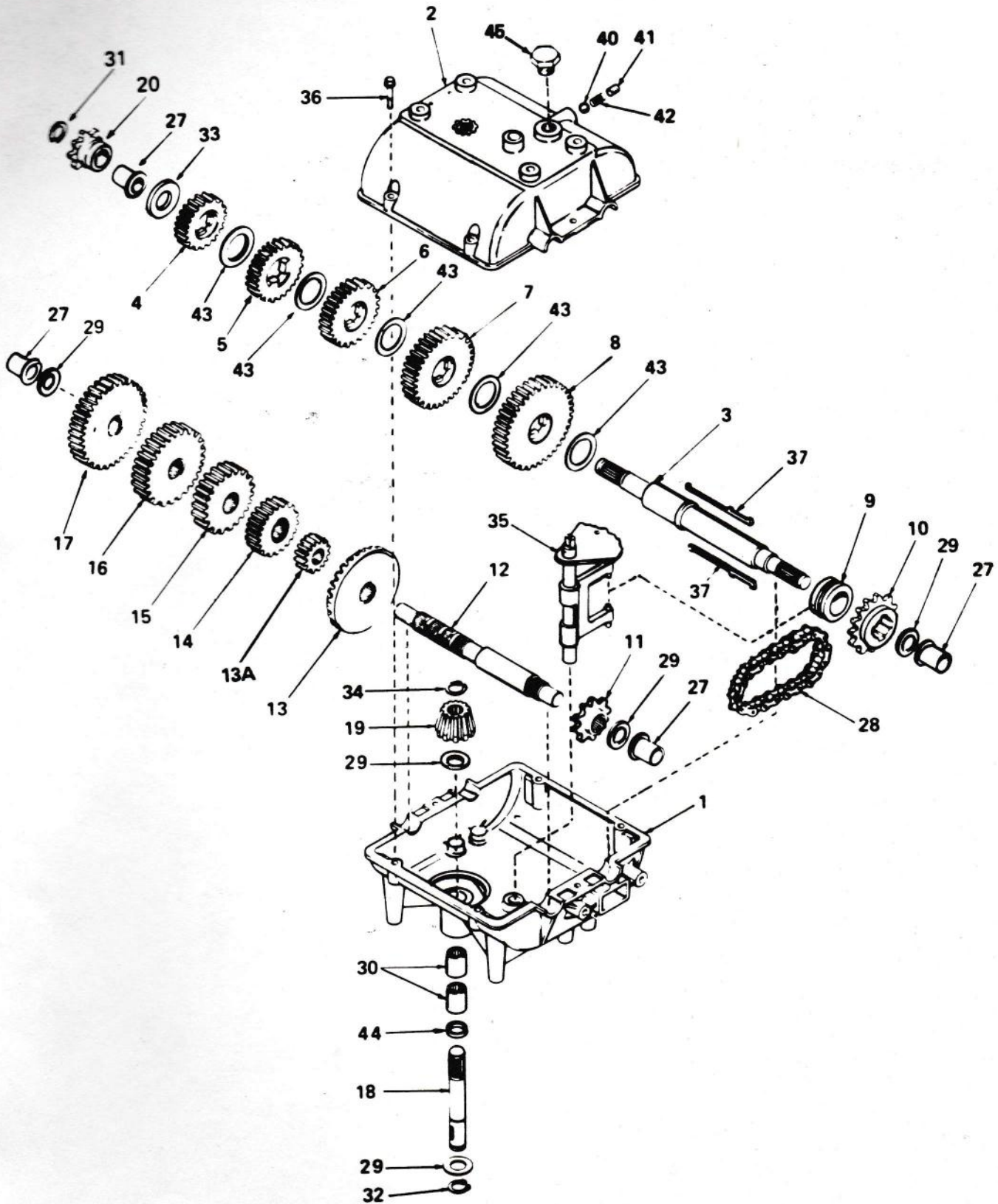
**ELECTRICAL SYSTEM — 16, 17 AND 18 H.P. UNITS**

ITEM NO.	PART NO.	QTY.	DESCRIPTION
1	18570	1	Key, Ignition Switch
2	19666	1	Nut, Jam 9/16-24
3	19667	1	Washer, Lock
4	20564	1	Switch, Ignition
5	38058	1	Connector
6	38059	12	Terminal
7	41551	2	Spring, Interlock Lever
8	42573	1	Closure, Vinyl
9	419455	3 (16, 18 HP) 2 (17 HP)	Nut, Lock 5/16-18
10	41988	4	Bushing, Interlock Lever
11	20916	2	Switch, Interlock
12	41987	2	Bracket, Interlock Actuating
13	107354	3	Nut, Stamped 9/16-18
14	190254	4	Nut, Lock 10-24
15	436738	2	Screw, Machine 10-24x1.50 Hex PHD
16	43474	2	Lever, Presence Control
17	38256	1	Hourmeter
18	33847	4	Boot, Battery Cable
19	11676	2 (16, 18 HP)	Nut, Speed 1/4-20
20	35634	1 (16, 18 HP)	Switch, Magnetic
21	180020	2 (16, 18 HP)	Bolt, Hex 1/4-20x.750
22	10629	4	Tie, Cable
23	41357	1 (16 HP)	Harness, Wiring
	43301	1 (17 HP)	Harness, Wiring
	43436	1 (18 HP)	Harness, Wiring
24	180018	2 (16 HP) 1 (17, 18 HP)	Bolt, Hex 1/4-20x.625
25	41881	1 (16, 17 HP)	Module, Interlock Electric
	43435	1 (18 HP)	Module, Interlock
26	419454	1	Nut, Lock 1/4-20
27	21425	1	Wire, Instrument Panel
28	35141	1 (16, 18 HP)	Cable, Solenoid to Starter
	35508	1 (17 HP)	Cable, Starter
29	42129	1 (16, 18 HP)	Cable, Battery to Solenoid
30	41359	1	Strap, Battery
31	42130	1	Cable, Negative Battery
32	159947	2	Screw, Machine 10-24x.75 PHD
33	131015	4	Washer, Flat .188x.438x.049
34	34640	2	Switch, Neutral Start
35	34637	1	Bracket, Interlock Switch
36	41356	4	Pad, Battery 3.5x4.0
37	41358	1	Battery, 12 Volt
38	120376	1 (16, 18 HP)	Nut, Hex 5/16-18
39	120393	3 (16, 18 HP)	Washer, Flat .344x.688x.065
40	180087	1 (16, 18 HP)	Bolt, Hex 5/16-18x2.00
41	446470	1 (16 HP)	Washer, Flat .375x1.125x.065
42	27122	2 (16 HP) 1 (17, 18 HP)	Clamp
43	42529	1	Wire, Ground
44	35378	1	Terminal, Ring Tongue
45	120392	1 (16 HP)	Washer, Flat .281x.625x.065

# TRANSMISSION

A-3025

Model 700-008



## TRANSMISSION

TRANSMISSION MODEL 700-008

<u>REF.</u> <u>NO.</u>	<u>PART NO.</u>	<u>DESCRIPTION</u>
1	770061	Case, Transmission
2	772083	Cover, Transmission
3	776164	Shaft, Output
4	778121A	Gear, Spur (20 teeth)
5	778122A	Gear, Spur (22 teeth)
6	778123A	Gear, Spur (25 teeth)
7	778124A	Gear, Spur (30 teeth)
8	778125	Gear, Spur (35 teeth)
9	784266	Collar, Shift
10	786083	Sprocket (18 teeth)
11	786082	Sprocket (9 teeth)
12	776134	Shaft, Counter
13	778137A	Gear, Bevel (42 teeth)
13A	778136	Gear, Spur (15 teeth)
14	778126A	Gear, Spur (20 teeth)
15	778127A	Gear, Spur (25 teeth)
16	778128A	Gear, Spur (28 teeth)
17	778129A	Gear, Spur (30 teeth)
18	776135	Shaft, Input
19	778113A	Bevel Pinion, Input
20	786095	Sprocket (12 teeth)
27	780105A	Bushing, Flanged
28	786081	Chain, Roller (No. 41 chain, 24 links)
29	780072	Washer, Thrust
30	780086	Bearing, Needle
31	792072	Ring, Retaining
32	792035	Ring, Retaining
33	780109	Washer
34	788040	Ring, Retaining
35	784267	Rod & Fork Assembly, Shift
36	792073	Screw, Hex Hd. Taptite, 1/4-20x1-1/4
37	792089A	Key
40	792077	Ball, Steel 5/16
41	792078	Screw, Set 3/8-16x3/8
42	792079	Spring
43	780108	Washer, Thrust
44	792001	O-Ring
45	792074	Plug

TECUMSEH PRODUCTS COMPANY  
Engine and Gear Service Division  
Grafton, Wisconsin

NOTE: Part Numbers listed on this page are Tecumseh part numbers and are to be ordered or purchased from the nearest Tecumseh Service Outlet, which may be found in the Yellow Pages of the Telephone Directory.